

HEADQUARTERS QUALITY OFFICE BUILDING AVAILABLE FOR LEASE AT NATIONAL LANDING



**3030 POTOMAC AVENUE
ALEXANDRIA, VIRGINIA**

PROPERTY HIGHLIGHTS

- Directly adjacent to the Virginia Tech's Innovation Campus
- Across the street from the entrance to the under construction Potomac Yard Metro Station
- Just minutes from Amazon's HQ 2 Campus
- Fabulous views of Washington, DC, Old Town Alexandria and the Potomac River
- LEED Silver and FitWel certified office building
- Up to 42,394 square feet available for lease
- 104,490 square foot headquarters quality office building
- Dramatic building entrance with full height atrium & glass enclosed stairwell
- Rooftop conference center
- On-site bike storage, locker rooms and tenant café
- LEED Silver and FitWel certified office building

For Leasing
Information
Please Contact:

MEANY & OLIVER

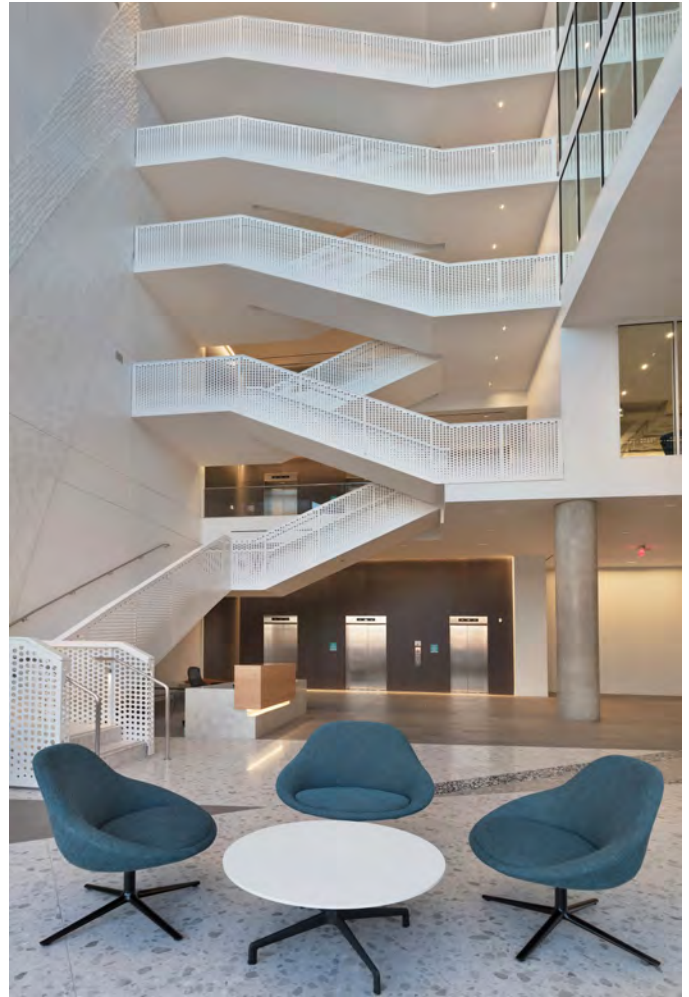
Phone: 703.448.9400

Email: 3030PotomacAve@MeanyOliver.com

HEADQUARTERS QUALITY BUILDING

Building Specifications

Floor Sizes:	1st Floor – approximately 5,724 sq. ft. Typical Floors – approximately 17,744 sq. ft. 7th Floor – approximately 12,412 sq. ft.
Finished Ceiling Heights	9 foot finished ceilings
Column Spacing	North/South - 30 feet with variation. East/West – 43'-9", 36'-0", 43'-9" with variation.
Windows	Vision glazing: 9 foot, sill at slab. Window wall and punched windows.
HVAC	Variable air volume (VAV) system. Perimeter boxes with reheat, interior boxes with shutoff. 1 perimeter box per 500 sq. ft.; 1 interior box per 1000 sq. ft.
Electrical System	480/277V, 208/120V. Three 42 circuit panelboards. 5 watts per sq. ft.
Elevators	3 conventional elevators. 2 dedicated for serving office and garage levels, 1 dedicated for serving office levels.
Roof Deck	Conference center located on the 7th floor opening onto a green roof with an event/reception area.
Parking	3 levels of below grade parking Ratio – 1.7 per 1,000 rentable sq. ft.
Loading Dock	Loading access from rear of building



**Sample
Office
Layout**

For Leasing
Information
Please Contact:

MEANY & OLIVER

Phone: 703.448.9400

Email: 3030PotomacAve@MeanyOliver.com

BUILDING AMENITIES & FLOOR PLANS



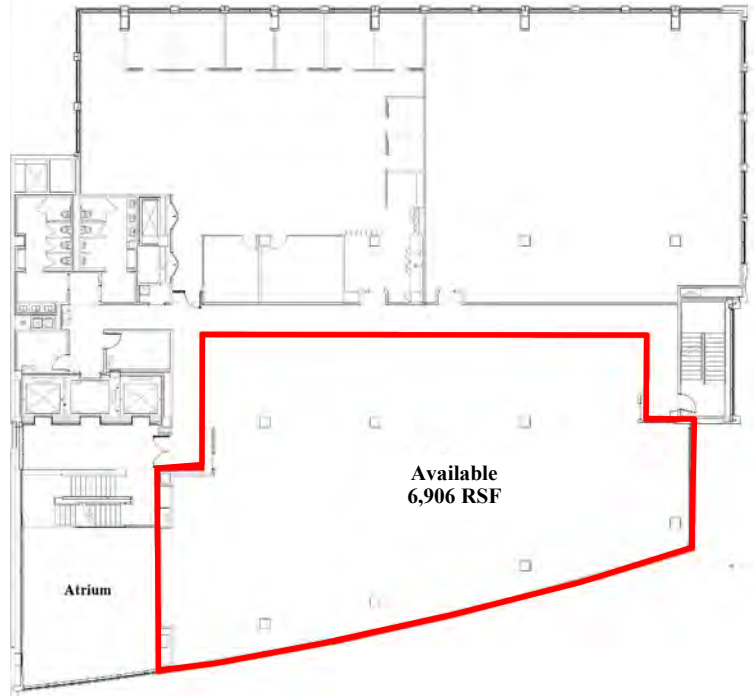
Honor Café



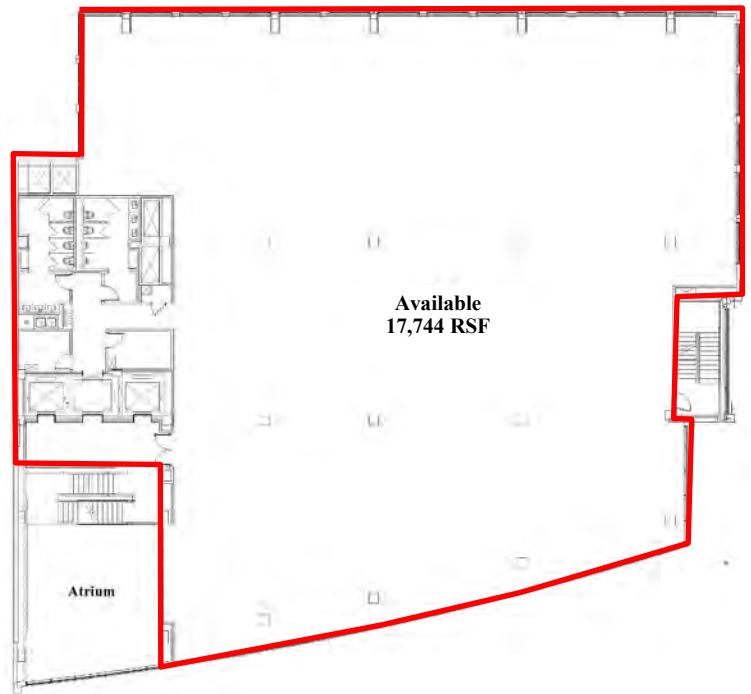
Conference Center Lobby



Fitness Center



4th Floor



Typical Floor Plan

For Leasing
Information
Please Contact:

MEANY & OLIVER

Phone: 703.448.9400

Email: 3030PotomacAve@MeanyOliver.com

PRIME LOCATION & ACCESS

Transportation & Commuting Access

Potomac Yard Metro Station (Opening Spring 2022)

Across the Street

Virginia Tech Innovation Campus

7 minutes walk—4 miles

Amazon HQ 2

7 minute ride - 1.9 miles

Crystal City Metro Station

7 minute ride - 1.9 miles

Ronald Reagan National Airport

6 minute ride - 1.8 miles

I-395

7 minute ride - 2.6 miles

Capitol Hill, DC

20-30 minute ride - 6.5 miles

Mount Vernon, VA

20-30 minute ride - 10.1 miles

McLean, VA

20-30 minute ride - 16.1 miles

Reston, VA

30-40 minute ride - 16.1 miles

Bethesda, MD

30—40 minute ride - 12.3 miles



For Leasing
Information
Please Contact:

MEANY & OLIVER

Phone: 703.448.9400

Email: 3030PotomacAve@MeanyOliver.com